



ASHE®

Year In Review

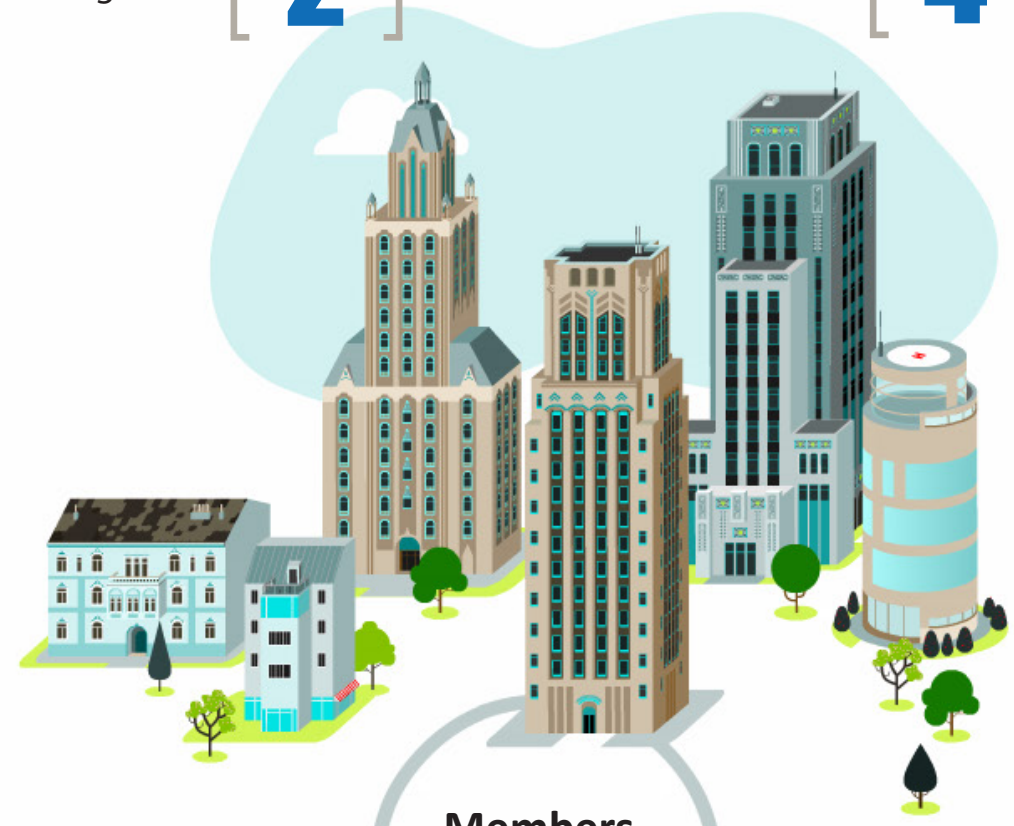


[1] **NEW REGION!**
Southwest Region

[2] **NEW STATES!**
Alabama, South Carolina

[4] **NEW SECTIONS!**
South Carolina, Alabama,
Central TX, Tennessee Valley

Save the Date For Our 2024 National Conference!
June 5 – 9, 2024
Raleigh Convention Center - Raleigh, North Carolina
Hosted by the Carolina Triangle Section



Membership Occupation:
13% Government
74% Consultants
4% Contractor
9% Other

Members Licensed:
58%

Breakdown of Members License:

- 10 AICP
- Professional Engineers 3700
- Landscape Architect 7
- 146 Professional Land Surveyors
- Professional Geologist 15

[1]

Mission that promotes
all transportation



49 Sections
19 in States

Events Hosted Nationwide

[370+]



[400]

Average Attendees
at Annual National
Conference

[10K +]

PDH hours
issued

[52]

Issues of
ASHE Inside
Lane
distributed

[6]

Partnership
Organizations
NACE, NAWIC, IECA,
SMPS, ASCET, IBC



[4]

Issues of
scanner
(digital & print)

[\$250K]

Given for
Scholarships and
Charitable Donations

Members
7,000+

JOIN ASHE TODAY! Go to www.ashe.pro to become a member!

DON'T HAVE A SECTION NEAR YOU? START ONE! OR BECOME A MEMBER AT LARGE!

Follow Us on...

