



ASHE[®] Year In Review

[**1**] **NEW SECTION!**
Tennessee Valley

[**5**] **EMERGING SECTIONS!**
South Carolina, New Mexico, Alabama, Austin, TX & Hartford, CT

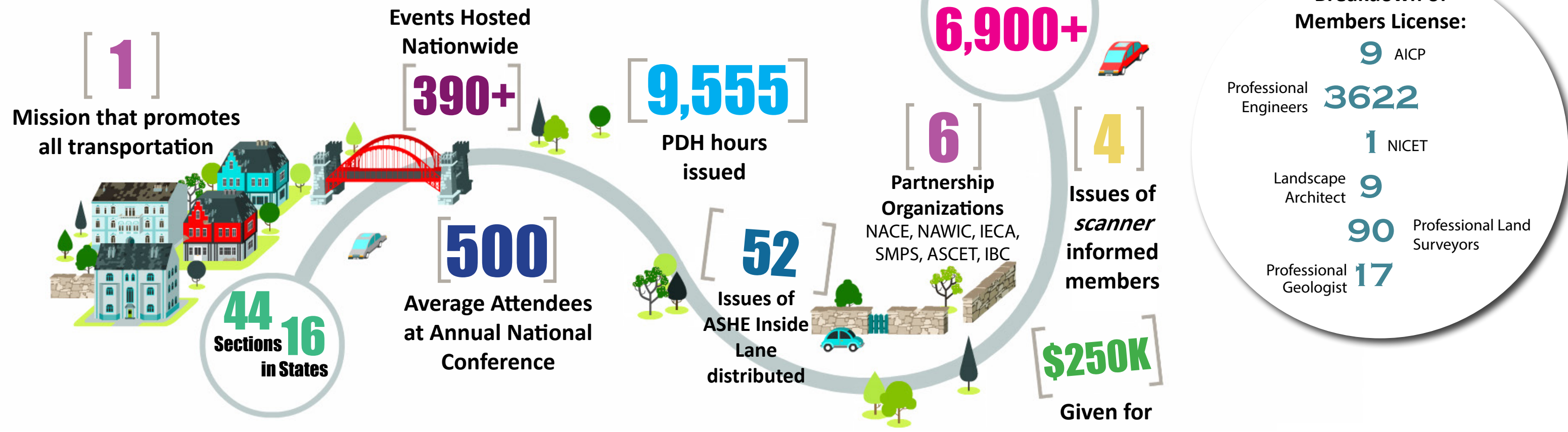


Membership Occupation:
12% Government
75% Consultants
5% Contractor
8% Other

Members Licensed:
56%

Through over 390 events, members benefited from networking, leadership and education through a forum of experts within the transportation industry. Check out the highlights of the year below!

2021 Conference - June 9-13, 2021 in Poconos, PA!
Info at: www.ashe.pro/conference.html



JOIN ASHE TODAY!

Go to www.ashe.pro to become a member to realize these benefits!

DON'T HAVE A SECTION NEAR YOU? START ONE! OR BECOME A MEMBER AT LARGE!

Follow Us on...

